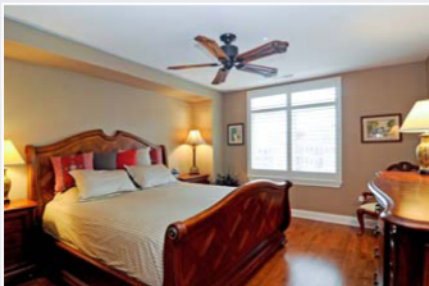


# 600 W TOUHY AVE #401



2 beds | 2 baths | \$80k in upgrades

## DISTINCTIVE FEATURES

- wood flooring throughout residence (except baths)
- Crown molding in great room, foyer, and kitchen
- Custom paint colors throughout residence
- 5 1/4" baseboards throughout residence
- Custom kitchen layout with Cherry cabinetry with 36" upper cabinets, 3 drawer base, and glass doors
- Upgraded stainless appliances, - cooktop and convection oven, microwave, dishwasher, and side-by-side counter depth refrigerator with in-door dispenser
- Granite countertops with full height backsplash
- Great closet space with custom wood organizers w/ file cabinet drawers, shelving, and a built-in safe

NOW PRICED AT  
**\$314,900**

WAS PREVIOUSLY  
~~\$460,900~~

assessment  
\$309/month\*

\*assessment includes gas, heat, water, sewer, trash removal, snow removal, landscaping, maintenance of the buildings

FOR SHOWINGS, CALL 847.698.3635

[uptownparkridge.com](http://uptownparkridge.com)

