

**50 N. NORTHWEST HWY.
RESIDENCE 502-406**

**2 Bedrooms plus Den
2 Baths
1,875 Square Feet
Large Balcony
2 Parking Spaces
Storage**



Distinctive Features

- Two Bedroom plus Den Home with a Large Balcony
- Hardwood Flooring throughout Foyer and Kitchen
- Brookhaven by Wood Mode Cherry Kitchen Cabinetry in Autumn with Black Glaze—Ample Cabinets and Drawers
- Granite Kitchen Countertops in New Venetian Gold
- KitchenAid Stainless Steel Appliances with Freezer on Bottom Architect Series Refrigerator with In-Door Dispenser
- Master Bath with Brookhaven by Wood Mode Maple Cabinets
- Convenient Den off Great Room
- Large Laundry Room

Sales Center

Call or Stop by Sales Center to Schedule a Showing
Open Wednesday through Monday, 10:00 a.m. - 5:00 p.m.
115 N. Northwest Highway, Park Ridge, IL 60068

847.698.3635

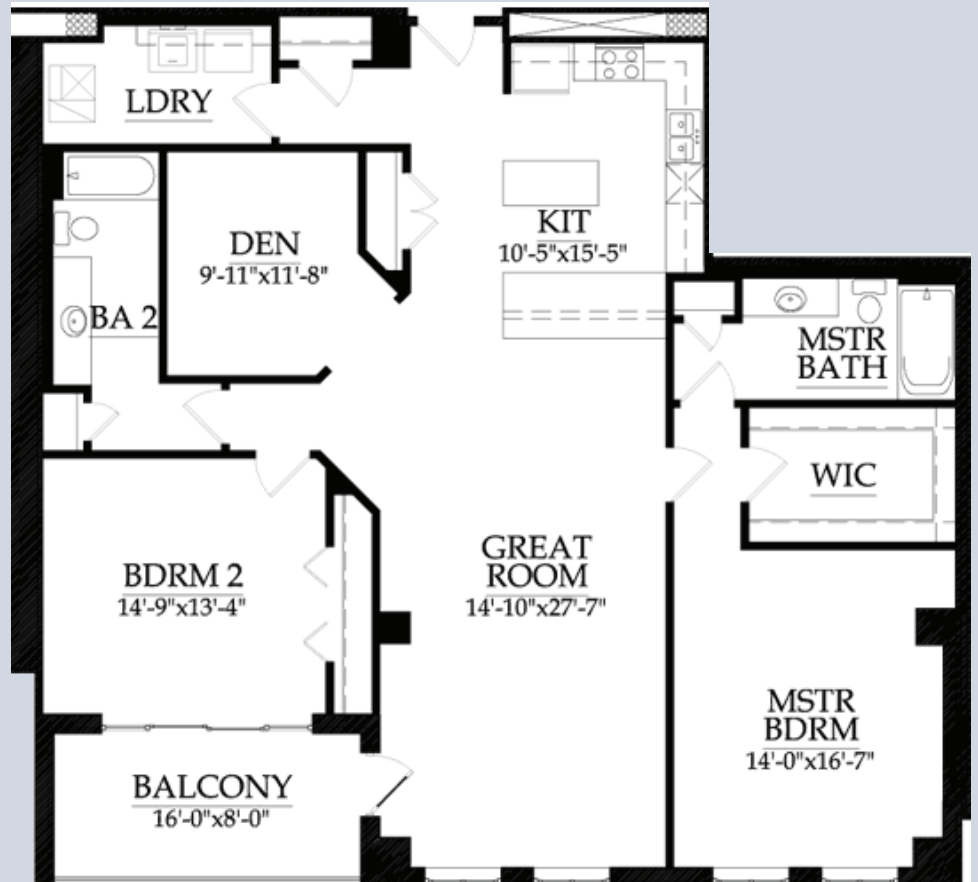
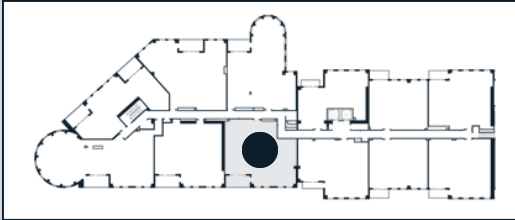
UptownParkRidge.com

* Prices as of 1-1-2009 and are subject to change without notice

**50 N. NORTHWEST HWY.
RESIDENCE 502-406**



- 2 Bedrooms plus Den**
- 2 Baths**
- 1,875 Square Feet**
- Large Balcony**
- 2 Parking Spaces**
- Storage**



Sales Center

Call or Stop by Sales Center to Schedule a Showing
Open Wednesday through Monday, 10:00 a.m. - 5:00 p.m.
115 N. Northwest Highway, Park Ridge, IL 60068

847.698.3635

UptownParkRidge.com

