

**600 W. TOUHY AVE.  
RESIDENCE 503-307**

**2 Bedrooms plus Den  
2 1/2 Baths  
2.127 Square Feet  
2 Balconies  
2 Parking Spaces  
Storage Space**



**Distinctive Features**

- Two Bedroom Corner Residence with Two Balconies overlooking Fountain Plaza
- Hardwood Flooring in Great Room and Hall
- Brookhaven by Wood Mode Cherry Kitchen Cabinetry in Cognac with Decorative Glass Accent Doors
- Granite Kitchen Countertops in Giallo Veneziano
- Stainless Steel Appliances with Gas Cooktop & Built-In Oven
- Den with Double French Doors
- Pre-Wire and Speakers for Future Plasma
- Recessed Can Lighting in Kitchen, Great Room, and Hall
- Master Bath with Brookhaven by Wood Mode Cherry Cabinets
- Gas Line to Balcony for Gas Grill
- 5 1/4" Base Trim throughout Residence

**Sales Center**

Call or Stop by Sales Center to Schedule a Showing  
Open Wednesday through Monday, 10:00 a.m. - 5:00 p.m.  
115 N. Northwest Highway, Park Ridge, IL 60068

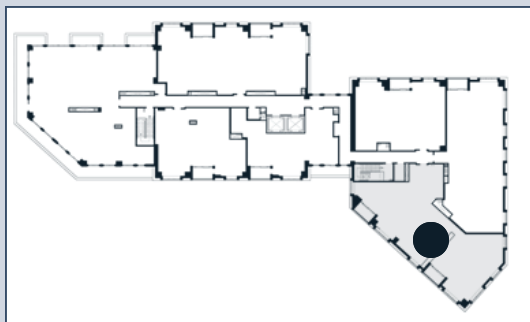
**847.698.3635**

**UptownParkRidge.com**

**600 W. TOUHY AVE.  
RESIDENCE 503-307**



- 2 Bedrooms plus Den
- 2 1/2 Baths
- 2.127 Square Feet
- 2 Balconies
- 2 Parking Spaces
- Storage Space



**Sales Center**

Call or Stop by Sales Center to Schedule a Showing  
Open Wednesday through Monday, 10:00 a.m. - 5:00 p.m.  
115 N. Northwest Highway, Park Ridge, IL 60068

**847.698.3635**

[UptownParkRidge.com](http://UptownParkRidge.com)

